


HOME COLLECTION

2026



INTEGRATED BESPOKE SOLUTIONS
FOR INDOORS & OUTDOORS



For more than four decades, Focal has created speaker drivers and high-end loudspeakers that deliver a unique sound. Our brand values are innovation and performance; excellence and pleasure. We are globally renowned for our exclusive technologies. The result of this technological heritage is class-leading products offering a natural, authentic performance, imbued with clarity and power. With our collection of integrated speakers and connected solutions, we offer you excellent listening quality through a variety of complementary products.



HOME CINEMA



KITCHEN



LIVING ROOM



BEDROOM



BATHROOM



OUTDOORS



RESTAURANT



PUBLIC PLACES

GLOSSARY

RANGES

UTOPIA CINEMA

Exclusive 'W' technology
and 'M'-shaped Beryllium tweeter

1000 SERIES

Exclusive 'W' technology
and Beryllium tweeter

300 SERIES

Exclusive Flax technology
and Aluminium/Magnesium tweeter

100 SERIES

Polyglass technology
and Aluminium tweeter

LITTORA 1000

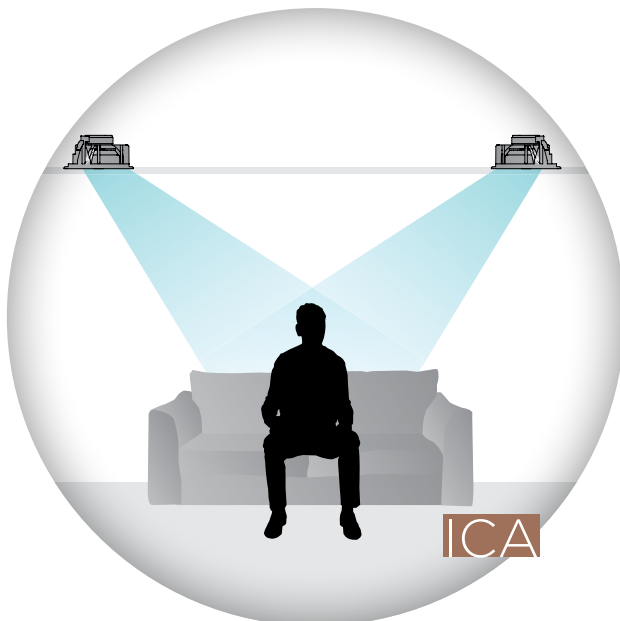
IP Fiber technology
and Beryllium tweeter

LITTORA 200

IP Iris technology
and Aluminium 'M' tweeter

MU-SO HEKLA

Dolby Atmos® technology
Naim Pulse Platform with Sphere
module for immersive system



APPLICATIONS

IC In-Ceiling

In-ceiling loudspeaker

IW In-Wall

In-wall loudspeaker

ICW In-Wall / In-Ceiling

In-wall and in-ceiling loudspeaker

IWLCR In-Wall Left Center Right

In-wall loudspeaker for left, center, right and surround channels

ICLCR In-Ceiling Left Center Right

In-ceiling loudspeaker for left, center, right and surround channels

ICA In-Ceiling Angled

In-ceiling angled loudspeaker for Dolby Atmos® effects

ST Stereo

In-wall and in-ceiling loudspeaker producing a stereo effect

OD Outdoor

IP-certified* outdoor loudspeaker

SAT Satellite

Discreet loudspeaker with multi-purpose fastenings

STONE Stone

Stone-effect outdoor loudspeaker

SUB Subwoofer

Integrated subwoofer

T 70 - 100 V transformer

To cover a very large listening area

UL UL certification

Fire and electric shock safety feature risks

SPEAKER DRIVER DIAMETER

4 4" or 10cm

5 5" or 13cm

6 6½" or 16.5cm

8 8" or 20cm

10 10" or 25cm

12 12" or 30cm



*IP codes are international standards used to identify the degrees of protection of products against the ingress of solid or liquid foreign objects. The first digit of the IP code represents the level of protection against the ingress of dust (0 to 6), the second represents the level of protection against water (0 to 8).



UTOPIA
CINEMA



1000 SERIES



300 SERIES



100 SERIES



100-T
SERIES

INDOOR



IN-CEILING

1000 ICLCR5
1000 ICA6
1000 ICW6

300 ICLCR5
300 ICA6
300 ICW8
300 ICW6
300 ICW4

100 ICLCR5
100 IC6ST
100 ICW8
100 ICW6
100 ICW5

100 ICW8-T
100 ICW6-T
100 ICW5-T



ON-CEILING



IN-WALL

CINEMA LCR
CINEMA SUB

1000 ICW6
1000 IWLCR UTOPIA
1000 IWSUB UTOPIA
1000 IWLCR6
1000 IW6

300 ICW8
300 ICW6
300 ICW4
300 IWLCR6
300 IW6

100 ICW8
100 ICW6
100 ICW5
100 IWLCR5
100 IW6
100 IWSUB8

100 ICW8-T
100 ICW6-T
100 ICW5-T



ON-WALL

CINEMA LCR
CINEMA SUB

1000 IWLCR UTOPIA*
1000 IWSUB UTOPIA*
1000 IWLCR6*
1000 IW6*



ON FURNITURE

OUTDOOR



IN-CEILING



ON-CEILING

100 OD8
100 OD6

100 OD8-T
100 OD6-T



IN-WALL



ON-WALL

100 OD8
100 OD6

100 OD8-T
100 OD6-T



FLOOR



LITTORA



ON WALL 300













DÔME FLAX



SIB EVO



MU-SO

1000 ICW8 1000 ICW10 1000 ICW SUB10 200 ICW6 200 ICW8				
		DÔME FLAX	SIB EVO	
1000 ICW8 1000 ICW10 1000 ICW SUB10 200 ICW6 200 ICW8				
		ON WALL 301 ON WALL 302	DÔME FLAX	SIB EVO SIB EVO DOLBY ATMOS®
		DÔME FLAX	SIB EVO SIB EVO DOLBY ATMOS®	MU-SO HEKLA MU-SO 2 ND GENERATION
1000 ICW8 1000 ICW10 1000 ICW SUB10 200 ICW6 200 ICW8				
OD SAT 5	 			
1000 ICW8 1000 ICW10 1000 ICW SUB10 200 ICW6 200 ICW8				
OD SAT 5	 			
OD SAT 5 OD STONE 8 OD SUB 12	 			



INDOOR SOLUTIONS

13



CONNECTED INDOOR SOLUTIONS

75



OUTDOOR SOLUTIONS

89



ELECTRONICS

109



COMMERCIAL SOLUTIONS

133

INDOOR SOLUTIONS

01. UTOPIA CINEMA 15

02. 1000 SERIES 21

03. 300 SERIES 29

04. 100 SERIES 35

05. ON WALL 300 43

06. DÔME FLAX 49

07. SIB EVO 55

08. SUBWOOFERS 63

ACCESSORIES 143



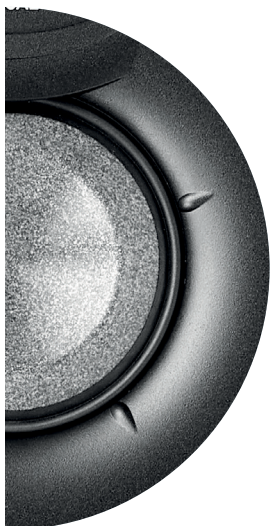
01.

UTOPIA CINEMA

Utopia-sized immersion

For uncompromising sound, from post-production to in-room listening, Focal engineers are constantly innovating. The UTOPIA CINEMA Integration range combines cutting-edge technologies with unmatched craftsmanship, delivering sensational, tailor-made sound immersion for private cinema rooms of up to 2153sq ft (200m²). With Cinema LCR and Cinema SUB, dialogue clarity and action scenes are rendered with exceptional precision, while maintaining a discreet installation.





'W'
sandwich cone



Pure 'M'-shaped
Beryllium tweeter



Large laminar
port



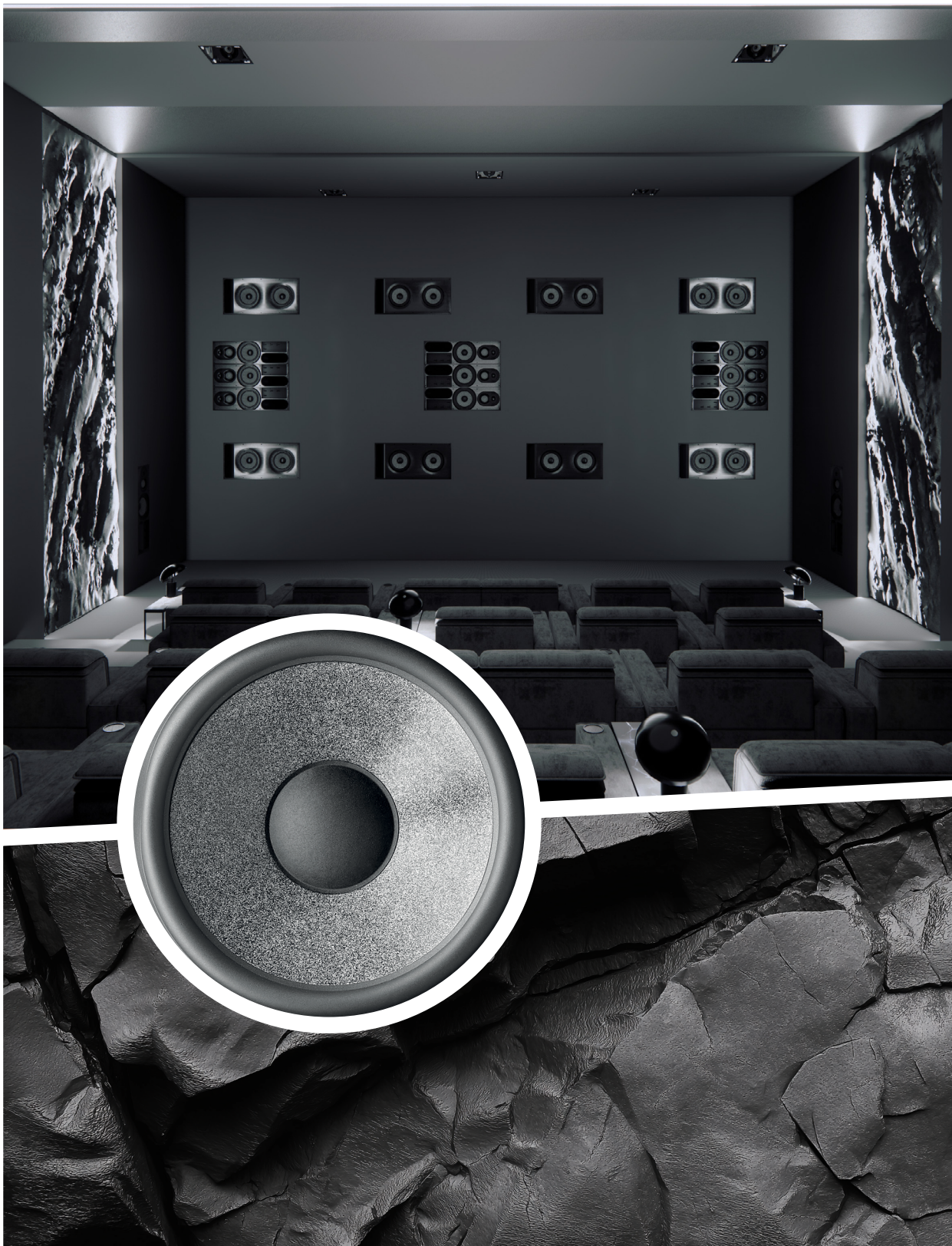
Speakon terminal block
and push-button



Performance
optimization settings



Unlimited
modularity





CINEMA LCR

CINEMA SUB

Type	3-way on-wall, in-wall or freestanding bass-reflex	Subwoofer on-wall, in-wall or freestanding bass-reflex
Tuned port	35Hz	19Hz
Speaker drivers	<ul style="list-style-type: none">• 13" 'W' cone woofer• 5" 'W' cone 'M'-shaped midrange• 1.5" 'M'-shaped Beryllium tweeter	<ul style="list-style-type: none">• 2 x 13" 'W' cone woofers
Frequency response	35Hz - 50kHz	42Hz - 2,500Hz
Sensitivity (2.83V/1m)	93dB	95dB
Nominal impedance	8Ω	5Ω
Recommended amp power	Max 400W (8Ω) / Max 800W (4Ω)	Max 400W (8Ω) / Max 800W (4Ω)
Settings	Midbass	-2.5dB / 0dB / +2.5dB (100Hz - 400Hz)
	Midrange	-1.5dB / 0dB / +2dB (400Hz - 2,5kHz)
	Treble	-3dB / 0dB / +2,5dB (2.5kHz - 10kHz)
	Listening position	0° / 30°
Dimensions (HxWxD)	45 ⁷ / ₈ x 13 ⁷ / ₈ x 12 ¹³ / ₁₆ " (116.5 x 35.2 x 32.6 cm)	45 ⁷ / ₈ x 21 ⁵ / ₈ x 12 ¹³ / ₁₆ " (116.5 x 54.9 x 32.6 cm)
Mounting depth	12 ¹³ / ₁₆ " (32.6 cm)	12 ¹³ / ₁₆ " (32.6 cm)
Weight	114.6lbs (52kg)	160.9lbs (73kg)



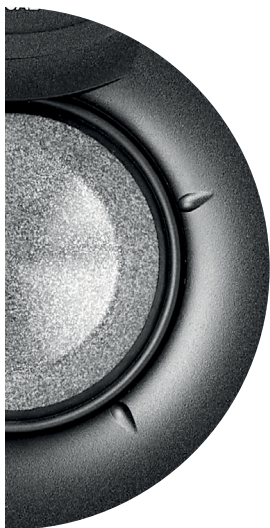
02.

1000 SERIES

Unrivalled listening experiences

With seven exceptional products, the 1000 Series line promises excellent stereo and Home Cinema sound reproduction. These in-wall and in-ceiling loudspeakers are discreet, complementary, and can be adjusted and positioned for flawless sound spatialisation without compromise in your listening area. Both Utopia products enhance the line with their power and their design, specifically thought out to be assembled together.

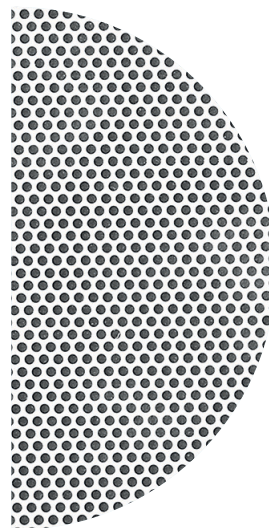




'W'
sandwich cone



Pure Beryllium
tweeter



Ready-to-paint
grille



Positionable
speaker drivers



Bespoke
solution



Easy Quick
Install®





UTOPIA

The icon far ahead of the rest

The collection's iconic flagship product, the 1000 Series Utopia loudspeaker does a sensational job at picking up the smallest sound details in films. Thanks to its mid-high range plate in the d'Appolito configuration, and with different speaker driver settings, the installation can be fully customised. For the ultimate system, the 1000 Series Utopia subwoofer has been designed to combine perfectly with the loudspeaker and to offer exceptional bass.

HANDCRAFTED

IN FRANCE



1000 IWLCR UTOPIA

1000 IWSUB UTOPIA

Type	3-way closed-back in-wall		Closed-back in-wall subwoofer	
Speaker drivers	<ul style="list-style-type: none"> • 4 x 6¹/₂" (16.5cm) 'W' Bass • 2 x 3¹/₈" (8cm) 'W' cone 'M'-shaped Midrange • 1" (27mm) pure Beryllium inverted dome tweeter 		3 x 6 ¹ / ₂ " (16.5cm) Bass with 'W' cone	
Frequency response	45Hz - 40kHz		40Hz - 2.5kHz	
Sensitivity (2.83V/1m)	92dB		83dB	74dB
Nominal impedance	8Ω		8Ω	72Ω
Recommended amp power	100 - 750W (8Ω) 200 - 1,500W (4Ω)		100 - 750W (8Ω) 200 - 1,500W (4Ω)	300 - 4,000W (8Ω) 300 - 4,000W (4Ω)
Settings	Tweeter (-3dB, 0dB, +3dB) Midrange (-2dB, 0dB, +2dB) Bass (-2dB, 0dB, +2dB)		Impedance selector 8Ω - 72Ω	
Dimensions (HxWxD)	45 ³ / ₄ x 12 x 4" (116.2 x 30.5 x 10.1cm)		23 ³ / ₈ x 12 x 4" (59.3 x 30.5 x 10.1cm)	
Mounting dimensions (HxW)	44 ⁵ / ₈ x 10 ⁷ / ₈ " (113.4 x 27.6cm)		22 ¹ / ₄ x 10 ⁷ / ₈ " (56.4 x 27.6cm)	
Mounting depth	3 ⁷ / ₈ " (9.9cm)		3 ⁷ / ₈ " (9.9cm)	
Weight (with grille)	42.77lbs (19.4kg)		21.16lbs (9.6kg)	
Accessory (optional)	On-Wall frame		On-Wall frame	



1000 IWLCR6



1000 IW6

Type	3-way closed-back in-wall	2-way closed-back in-wall
Speaker drivers	<ul style="list-style-type: none">• 7" (18cm) 'W' Passive radiator• 6 1/2" (16.5cm) 'W' Bass• 3" (8cm) 'W' Midrange• 1" (27mm) Pure Beryllium inverted dome tweeter	<ul style="list-style-type: none">• 6 1/2" (16.5cm) 'W' Mid-Bass• 1" (27mm) Pure Beryllium inverted dome tweeter
Frequency response	48Hz - 40kHz	55Hz - 40kHz
Sensitivity (2.83V/1m)	91dB	89dB
Nominal impedance	8Ω	8Ω
Recommended amp power	50 - 180W	25 - 150W
Settings	Tweeter (-3dB, 0dB, +3dB) Midrange (-3dB, 0dB, +3dB)	Tweeter (-3dB, 0dB, +3dB)
Dimensions (HxWxD ou ØxD)	29 3/4 x 12 x 4" (75.5 x 30.5 x 10.1cm)	17 1/8 x 12 x 4" (43.5 x 30.5 x 10.1cm)
Mounting dimensions (HxW ou Ø)	28 5/8 x 10 7/8" (72.6 x 27.6cm)	16 x 10 7/8" (40.6 x 27.6cm)
Mounting depth	3 7/8" (9.9cm)	3 7/8" (9.9cm)
Weight (with grille)	24.14lbs (10.95kg)	14.88lbs (6.75kg)
Accessory (optional)	On-wall frame	On-wall frame



1000 ICLCR5

3-way bass-reflex in-ceiling

- 2 x 5" (13cm) 'W' Bass
- 4" (10cm) 'W' Midrange
- 1" (25mm) Beryllium inverted dome tweeter

53Hz - 40kHz

91dB

8Ω

25 - 240W

Tweeter (-3dB, 0dB, +3dB)
Midrange (-3dB, 0dB, +3dB)

14^{5/8} x 14^{5/8} x 7^{5/8}"
(37 x 37 x 19.5mm)

13^{3/8} x 13^{3/8}"
(34 x 34cm)

7^{1/2}" (19cm)

18.30lbs (8.3kg)

-



1000 ICA6

2-way coaxial in-ceiling

- 6^{1/2}" (16.5cm) 'W' Mid-Bass
- 1" (25mm) Pure Beryllium inverted dome tweeter

55Hz - 40kHz

90.5dB

8Ω

25 - 150W

Tweeter (-3dB, 0dB, +3dB)

11^{3/4} x 5"
(29.9 x 12.7cm)

10^{3/8}"
(26.4cm)

5^{3/4}" (14.6cm)

6.61lbs (3kg)

-



1000 ICW6

2-way coaxial
in-wall/in-ceiling

- 6^{1/2}" (16.5cm) 'W' Mid-Bass
- 1" (25mm) Pure Beryllium inverted dome tweeter

55Hz - 40kHz

89dB

8Ω

25 - 150W

Tweeter (-3dB, 0dB, +3dB)

9^{5/8} x 4^{1/8}"
(24.4 x 10.5cm)

8^{1/2}"
(21.6cm)

4" (10cm)

5.29lbs (2.4kg)

-

03.

300 SERIES

A source of inspiration

Bring a whole new vibe to your spaces with the 300 Series and its natural flax cone speaker drivers. In addition to the acoustic qualities and sound clarity they offer, the products are innovatively designed and quick to fit, thanks to the Easy Quick Install® (EQI) system. Whether for stereo or Home Cinema use, or as a complement to a traditional hi-fi system, all you have to do is make your choice and enjoy.

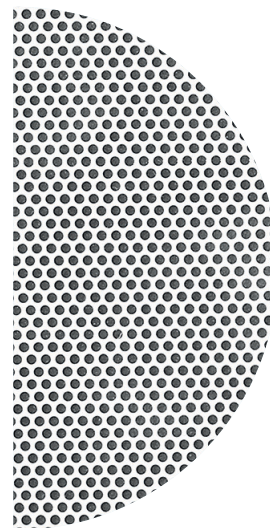




Flax
cone



Al/Mg
tweeter



Ready-to-paint
grille



Positionable
plate



Tweeter and
midrange settings



Easy Quick
Install[®]





300 IWLCR6



300 IW6



300 ICLCR5

Type	3-way in-wall	2-way in-wall	3-way bass-reflex in-ceiling
Speaker drivers	<ul style="list-style-type: none">• 2 x 6¹/₂" (16.5cm) Woofer• 4" (10cm) Flax Midrange• 1" (25mm) Al/Mg inverted dome tweeter	<ul style="list-style-type: none">• 6¹/₂" (16.5cm) Flax cone Mid-Bass• 1" (25mm) Al/Mg inverted dome tweeter	<ul style="list-style-type: none">• 2 x 5" (13cm) Flax Woofer• 4" (10cm) Flax Midrange• 1" (25mm) Al/Mg inverted dome tweeter
Frequency response	40Hz - 28kHz	55Hz - 28kHz	55Hz - 28kHz
Sensitivity (2.83V/1m)	92dB	90dB	91dB
Nominal impedance	8Ω	8Ω	8Ω
Recommended amp power	50 - 150W	25 - 130W	50 - 150W
Settings	Tweeter (-3dB, 0dB, +3dB) Midrange (-3dB, 0dB, +3dB)	Tweeter (-3dB, 0dB, +3dB) Midrange (-3dB, 0dB, +3dB)	Tweeter (-3dB, 0dB, +3dB) Midrange (-3dB, 0dB, +3dB)
Dimensions (HxWxD or ØxD)	23 ⁵ / ₈ x 8 ¹¹ / ₁₆ x 3 ⁷ / ₈ " (60 x 22 x 9.8cm)	12 ³ / ₄ x 8 ¹¹ / ₁₆ x 3 ⁷ / ₈ " (32.3 x 22 x 9.8cm)	14 ⁹ / ₁₆ x 14 ⁹ / ₁₆ x 7 ¹¹ / ₁₆ " (37 x 37 x 19.5cm)
Mounting dimensions (HxW ou Ø)	22 ³ / ₈ x 7 ¹ / ₂ " (56.8 x 19.1cm)	11 ¹ / ₂ x 7 ¹ / ₂ " (29.2 x 19.1cm)	13 ³ / ₈ " x 13 ³ / ₈ " (34 x 34cm)
Mounting depth	3 ⁵ / ₈ " (9.3cm)	3 ⁵ / ₈ " (9.3cm)	7 ¹ / ₂ " (19cm)
Weight	12.4lbs (5.65kg)	4.9lbs (2.25kg)	16.3lbs (7.4kg)



300 ICA6

2-way coaxial
in-ceiling

- 6¹/₂" (16.5cm)
Flax Mid-Bass
- 1" (25mm) Al/Mg
inverted dome tweeter

65Hz - 28kHz

89.5 dB

8Ω

25 - 130W

Tweeter (-3dB, 0dB, +3dB)

11³/₄ x 5"
(29.9 x 12.7cm)

10³/₈" (26.4cm)

5³/₄" (14.6cm)

6.6lbs (3kg)



300 ICW8

2-way coaxial
in-wall/in-ceiling

- 8" (21cm) Flax Mid-Bass
- 1" (25mm) Al/Mg
inverted dome tweeter

48Hz - 28kHz

90dB

8Ω

25 - 150W

Tweeter (-3dB, 0dB, +3dB)

11³/₄ x 5"
(29.9 x 12.7cm)

10³/₈" (26.4cm)

4³/₄" (12.2cm)

7.05lbs (3.2kg)



300 ICW6

2-way coaxial
in-wall/in-ceiling

- 6¹/₂" (16.5cm)
Flax Mid-Bass
- 1" (25mm) Al/Mg
inverted dome tweeter

65Hz - 28kHz

89dB

8Ω

25 - 130W

Tweeter (-3dB, 0dB, +3dB)

9⁵/₈ x 4¹/₈"
(24.4 x 10.5cm)

8¹/₂" (21.6cm)

4 (10cm)

5.29lbs (2.4kg)



300 ICW4

2-way in-wall/in-ceiling

- 4" (10cm) Flax Mid-Bass
- 1" (25mm) Al/Mg
inverted dome tweeter

80Hz - 28kHz

88dB

8Ω

25 - 100W

Tweeter (-3dB, 0dB, +3dB)

7⁹/₁₆ x 3⁷/₈"
(19.2 x 9.8cm)

6³/₈" (16.3cm)

3⁵/₈" (9.3cm)

2.6lbs (1.3kg)

04.

100 SERIES

Discreet musicality

A comprehensive solution for your home audio needs, indoors and outdoors, the 100 Series offers outstanding performance from a compact design. The range is ideal for small-to-medium-sized rooms, for seamless sound throughout the house, stereo listening or Home Cinema installations. The tropicalised Polyglass cone is even suited for bathroom use too.

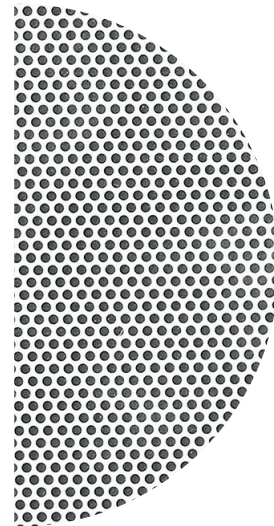




Polyglass
cone



Aluminium
tweeter



Ready-to-paint
grille



Positionable
tweeter

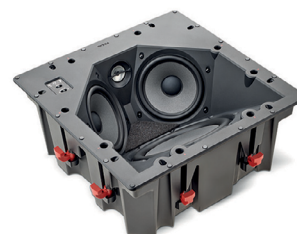


Tropicalised
cone

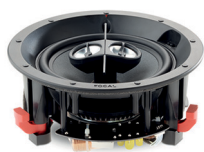


Compact design
unibody chassis





	100 IWLCR5	100 IW6	100 ICLCR5
Type	2-way in-wall D'Appolito	2-way in-wall	2-way in-ceiling
Speaker drivers	<ul style="list-style-type: none"> • 2 x 5" (13cm) Polyglass Mid-Bass • 1" (25mm) Aluminium inverted dome tweeter 	<ul style="list-style-type: none"> • 6 1/2" (16,5cm) Polyglass Mid-Bass • 1" (25mm) Aluminium inverted dome tweeter 	<ul style="list-style-type: none"> • 2 x 5" (13cm) Polyglass Mid-Bass • 1" (25mm) Aluminium inverted dome tweeter • 8" (21cm) Polyglass Passive radiator
Frequency response	55Hz - 23kHz	60Hz - 23kHz	65Hz - 23kHz
Sensitivity (2.83V/1m)	90.5dB	89dB	92dB
Nominal impedance	8Ω	8Ω	8 Ω
Recommended amp power	25 - 120W	25 - 120W	25 - 120W
Settings	Tweeter (-3dB, 0dB, +3dB) Midrange (-3dB, 0dB, +3dB)	Tweeter (-3dB, 0dB, +3dB) Midrange (-3dB, 0dB, +3dB)	Tweeter (-3dB, 0dB, +3dB)
Dimensions (HxWxD ou ØxD)	17 3/8" x 6 3/4" x 3 3/8" (44 x 17.3 x 8.6cm)	11 3/4" x 7 5/8" x 3 5/8" (29.8 x 19.5 x 9.2cm)	14 x 14 x 5 5/16" (35.4 x 35.4 x 15cm)
Mounting dimensions (HxW ou Ø)	16 3/8" x 5 3/4" (41.5 x 14.7cm)	10 3/4" x 6 3/4" (27.3 x 17cm)	12 7/8" x 12 7/8" (32.8 x 32.8cm)
Mounting depth	3 1/4" (8.3cm)	3 1/2" (8.8cm)	6" (15.2cm)
Weight	3.89lbs (2.9kg)	4.1lbs (1.85kg)	11.6lbs (5.3kg)



100 IC6ST

2-way stereo
coaxial in-ceiling

- 6 $\frac{1}{2}$ " (16,5cm) Dual voice coil Polyglass Mid-Bass
- 2 x 1" (25mm) Aluminium inverted dome tweeter

60Hz - 23kHz

89dB

8 Ω

25 - 100W

Tweeter (-3dB, 0dB, +3dB)

8 $\frac{3}{16}$ x 3 $\frac{3}{4}$ "
(20.8 x 9.5cm)

7 $\frac{1}{4}$ " (18.4cm)

3 $\frac{5}{8}$ " (9.1cm)

3.86lbs (1.75kg)

100 ICW8

2-way coaxial
in-wall/in-ceiling

- 8" (21cm) Polyglass Mid-Bass
- 1" (25mm) Aluminium inverted dome tweeter

53Hz - 23kHz

90dB

8 Ω

25 - 150W

Tweeter (-3dB, 0dB, +3dB)

9 $\frac{3}{4}$ x 4 $\frac{3}{8}$ "
(24.8 x 11.1cm)

81 $\frac{3}{16}$ " (22.4cm)

4 $\frac{1}{4}$ " (10.7mm)

3.86lbs (1.75kg)

100 ICW6

2-way coaxial
in-wall/in-ceiling

- 6 $\frac{1}{2}$ " (16.5cm) Polyglass Mid-Bass
- 1" (25mm) Aluminium inverted dome tweeter

62Hz - 23kHz

89dB

8 Ω

25 - 100W

Tweeter (-3dB, 0dB, +3dB)

8 $\frac{3}{16}$ x 3 $\frac{3}{4}$ "
(20.8 x 9.5cm)

7 $\frac{1}{4}$ " (18.4cm)

3 $\frac{3}{4}$ " (9.1cm)

3.3lbs (1.5kg)

100 ICW5

2-way coaxial
in-wall/in-ceiling

- 5" (13cm) Polyglass Mid-Bass
- 1" (25mm) Aluminium inverted dome tweeter

65Hz - 23kHz

88dB

8 Ω

15 - 100W

Tweeter (-3dB, 0dB, +3dB)

7 $\frac{1}{4}$ x 3 $\frac{7}{16}$ "
(18.4 x 8.7cm)

6 $\frac{5}{16}$ " (16cm)

3 $\frac{1}{4}$ " (8.2cm)

3.19lbs (1.45kg)



100 IWSUB8

Type	Passive subwoofer
Speaker drivers	8" (21cm) Polyglass Woofer
Frequency response	34 - 140Hz
Sensitivity (2.83V/1m)	89dB
Nominal impedance	8Ω
Recommended amp power	Max 200W / 4Ω
Dimensions (WxDxH)	13 ^{7/8} x 3 ^{7/8} x 5 ^{13/16} " (130 x 9.8 x 35.2cm)
Mounting dimensions (WxH)	13 ^{7/8} x 5 ^{13/16} " (130 x 35.2cm)
Mounting depth	3 ^{3/8} " (8.6cm)
Weight	32.3lbs (14.6kg)



100 IWSUB8 AMPLIFIER

Type	Subwoofer amplifier
Power (continuous)	Max 200W, 150W continuous 4Ω
Minimum load	4Ω
Voltage range	100 - 120V / 60Hz 220 - 230V / 50Hz
Power consumption	150W
Stand-by power consumption	0.5W
Frequency response	20 - 250Hz
Subsonic filter	18dB / oct.
Inputs	LFE, Line in L/R
Outputs	Line out L/R and subwoofer out binding post
Cord	Detachable IEC power cord
Protection	Dynamic power control, thermal protection, short circuit, fuse and over-current protection
Dimensions (HxWxD)	1.8" (2" with feets) x 16.9" (19" with rack brackets) x 10.1"
Weight	6.8lbs (3.1kg)



**PACK 2 x 100 IWSUB8 &
100 IWSUB8 AMPLIFIER**



**PACK 100 IWSUB8 &
100 IWSUB8 AMPLIFIER**

05.

ON WALL 300

Creating emotion

Designed for hi-fi and Home Cinema use, the allure of the On Wall 300 loudspeakers lies in their sleek design, 'angled' silhouette and incredible sound. Their speaker drivers boast a Flax cone to bring realism, vocal clarity and sonic detail into your home. Available in a White High Gloss or Black Satin finish, On Wall 300 blends seamlessly into interiors, around a television.





Flax
cone



Al/Mg
tweeter



Magnetic
grille



Side
ports



Black Satin
finish



White High Gloss
finish





ON WALL 301



ON WALL 302

Type	2-way bass-reflex loudspeaker	2.5-way bass-reflex loudspeaker
Speaker drivers	<ul style="list-style-type: none">• 2 x 4" (10cm) Flax Mid-Bass• 1 x 1" (25mm) Tweeter TNF	<ul style="list-style-type: none">• 4 x 4" (10cm) Flax Mid-Bass• 1 x 1" (25mm) Tweeter TNF
Frequency response	53Hz - 28kHz	50Hz - 28kHz
Crossover frequency	2,500Hz	1,100Hz - 2,500Hz
Sensitivity (2.83V/1m)	87dB	91dB
Nominal impedance	8Ω	8Ω
Recommended amp power	25 - 130W	40 - 180W
Dimensions (HxWxD)	31 ^{1/2} x 6 ^{1/8} x 3 ^{9/16} " (80 x 15.5 x 9cm)	49 ^{3/16} x 6 ^{1/8} x 3 ^{9/16} " (125 x 15.5 x 9cm)
Finishes	 	 
Weight	13lbs (5.9kg)	20.72lbs (9.4kg)



ON WALL 300 STANDS



Stands sold separately by pair.

06.

DÔME FLAX

The sound spotlight

Made in France, Dôme is a line of miniature loudspeakers boasting a Flax sandwich cone, exclusive to Focal. This technology provides genuine benefits in terms of sound definition and precision. In terms of appearance, the Dôme design blends fine materials and elegant finishes. The loudspeakers are positionable and easily integrated into the wall, ceiling or on a stand, as you prefer.





Flax
cone



Al/Mg
tweeter



Optional
stands



On-wall or on-ceiling
mounting



White High Gloss
finish



Black High Gloss
finish





DÔME FLAX

Type	2-way compact sealed speaker
Speaker drivers	<ul style="list-style-type: none">• 4" (10cm) Flax Mid-Bass• 1" (25mm) Al/Mg inverted dome tweeter
Frequency response	80Hz - 28kHz
Sensitivity (2.83V/1m)	88dB
Nominal impedance	8Ω
Recommended amp power	25 - 100W
Dimensions (HxWxD)	6 ^{3/4} x 5 ^{11/16} x 5 ^{5/8"} (17.2 x 14.4 x 14.3cm)
Finishes	
Weight	4.19lbs (1.9kg)



PACK DÔME FLAX 5.1

5 x Dôme Flax
1 x Sub Air



Stands sold separately by pair.

DÔME STANDS



07.

SIB EVO

At the heart of the action

The line comprises one traditional loudspeaker, the Sib Evo, a second Sib Evo Dolby Atmos® model equipped with a specific speaker driver on top, and an active subwoofer, the Cub Evo. These satellite loudspeakers combine front and vertical diffusion thanks to the Dolby Atmos® effects created. The sound waves are projected onto the ceiling and are then reflected back to the listener for an immersive experience.





Polyflex
speaker driver



Dolby Atmos®
effects



Optional
stands



Compact
loudspeaker

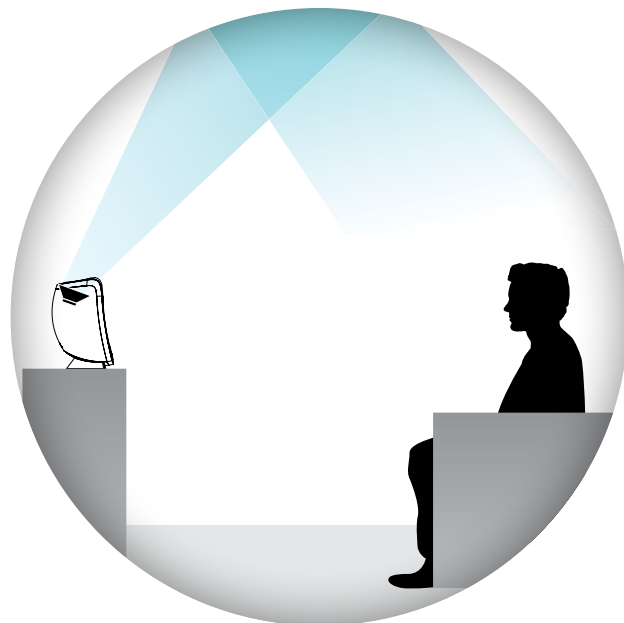


Optional wall
attachments



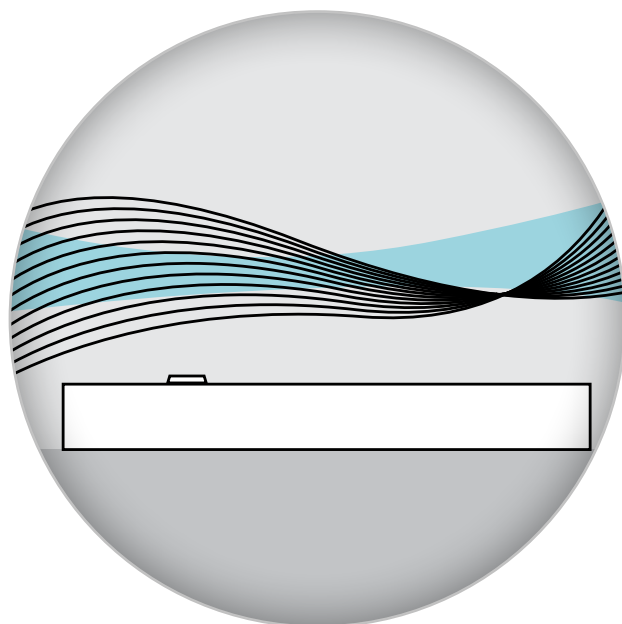
Black
finish





DOLBY ATMOS®

Dolby Atmos® technology offers a cinema experience by creating powerful sound effects. You will find yourself at the heart of the action, music and dialogue of the films you watch, plunged into a 3D space of captivating realism. The Sib Evo loudspeakers equipped with Dolby Atmos® technology are called enabled speakers. In addition to the vertical speaker driver, a second is installed on the upper surface of the loudspeaker and directs the sound towards the ceiling at a carefully calculated angle, so that the signal is reflected around the entire room. The sound comes simultaneously from the front, back, sides and above.



IMMERSIVE AUDIO

Focal & Naim engineers developed the Sphere module of the Naim Pulse Platform by combining multiple technologies. Thanks to this module, Mu-so Hekla (p.77) offers a range of immersive audio modes compatible with all audiovisual content, whether stereo or Dolby Atmos®, and adapted to every listening environment (open or enclosed rooms). Our exclusive Sphere modes use the reflection of sound waves off the walls and ceiling to create a fully immersive sound experience within the room. This room-based spatialization allows precise control of audio streams from the speakers all the way to the listening position. The immersion is spectacular.



SIB EVO DOLBY ATMOS®

SIB EVO

Type	<ul style="list-style-type: none">• Front channel: 2-way bass-reflex loudspeaker• Dolby Atmos® channel: Full-range sealed loudspeaker	2-way compact bass-reflex loudspeaker
Speaker drivers	<ul style="list-style-type: none">• Front channel: 5" (13cm) Polyflex Woofer• ¾" (19mm) soft dome tweeter• Dolby Atmos® channel: 4" (10cm) full-range speaker	<ul style="list-style-type: none">• 5" (13cm) Polyflex Woofer• ¾" (19mm) soft dome tweeter
Frequency response	<ul style="list-style-type: none">• Front channel: 65Hz to 25kHz• Dolby Atmos® channel: 90Hz to 20kHz	70Hz to 25kHz
Sensitivity (2.83V/1m)	90dB	90dB
Nominal impedance	6Ω	6Ω
Recommended amp power	25 - 200W	25 - 200W
Dimensions (HxWxD)	11 ⁵ / ₈ x 7 ¹ / ₁₆ x 7 ¹ / ₂ " (29.5 x 19.5 x 19cm)	9 ¹⁵ / ₁₆ x 6 ³ / ₈ x 6 ³ / ₈ " (25.2 x 16.2 x 16.2cm)
Weight	7lbs (3.25kg)	4lbs (1.8kg)



PACK SIB EVO DOLBY ATMOS® 5.1.2

3 x Sib Evo
2 x Sib Evo Dolby Atmos®
1 x Cub Evo
2 x Wall attachments



PACK SIB EVO 5.1

5 x Sib Evo
1 x Cub Evo
2 x Wall attachments



WALL ATTACHMENTS

Wall attachment supplied
with 5.1 and 5.1.2 packs.



HIP EVO STANDS

Hip Evo stands
sold as optional extra.

08.

SUBWOOFERS

Dynamics, impact and depth

The subwoofer is a major component of any audio installation, providing dynamics and intensity. With their sleek design, Focal subwoofers offer a deep, impactful and powerful bass. They effectively complement a wide range of configurations, from the most sophisticated Home Cinema installations to compact systems. All you have to do is choose the subwoofer for you!







SUB UTOPIA EM COLOUR EVO

SW 1000 BE

SUB 1000 F

Type	Stackable passive subwoofer		Active bass-reflex subwoofer	Active closed subwoofer
Speaker drivers	<ul style="list-style-type: none">Electromagnetic 13" (33cm) 'W' WooferStackable (up to 3 subwoofers tall)Almost 130dB SPL at 1m (in a corner)		13" (33cm) 'W' Woofer	12" (30cm) Flax Woofer
Frequency response	22Hz - 500Hz		20Hz - 150Hz	24Hz - 160Hz
Response at - 6dB	19Hz		18Hz	22Hz
Features	Sensitivity (2.83V/1m)	93dB	<ul style="list-style-type: none">LFE/Stereo/Digital inputsAdjustable LPF: 50Hz to 150Hz (24dB/oct.), 48dB/oct.Adjustable subsonic crossover3 user memoriesNight mode and Boost modeAutopower	<ul style="list-style-type: none">LFE/Stereo inputsAdjustable subsonic crossover: 40Hz to 160Hz/12dB/OctPhase inverter: 0 - 180°Autopower
	Nominal impedance	8Ω		
	Minimal impedance	5.5Ω		
	Recommended amp power	500 - 1,000W		
Amplifier power	-		600W BASH® amplifier	1000W BASH® amplifier
Finishes	 		-	-
Dimensions (HxWxD)	25 ^{15/16} x 19 x 24 ^{1/2} " (63.4 x 48.3 x 62.2cm)		21 ^{1/16} x 19 ^{11/16} x 17" (53.5 x 50 x 43.2cm)	16 ^{17/32} x 15 ^{3/4} x 16 ^{17/32} " (42 x 40 x 42cm)
Weight	158.5lbs (72kg)		92.4lbs (42kg)	47lbs (21.5kg)



SUB 600P

Active closed subwoofer

12" (30cm)
Polyflex Woofer

28Hz - 270Hz

26Hz

- RCA input: Right, left, LFE
- Variable crossover frequency: 40Hz - 200Hz (LFE)
- Phase inverter: 0 - 180°
- Auto Standby enable / disable

600W Dynamic
300W RMS

-

15^{3/4} x 15^{3/4} x 16^{3/4}"
(40 x 40 x 42.5mm)

46.3lbs (21kg)



SUB AIR

Flat bass-reflex subwoofer

8" (21cm) Woofer
cellulose pulp cone

42Hz - 200Hz

35Hz

- Wireless Transmitter (KLEER® technology) LFE and Left/Right Input
- Variable crossover frequency: 50Hz to 200Hz
- Autopower

150W
BASH® amplifier



16.1 x 14.2 x 6.3"
(41 x 36 x 16cm)

17lbs (7.65kg)



CUB EVO

Active bass-reflex subwoofer

8" (21cm)
Polyflex Woofer

35Hz - 150Hz

30Hz

- Right, left LFE
- Variable crossover frequency: 40Hz to 200Hz (LFE)
- On/Autopower (0.5W)

200W
Class D amplifier

-

12 x 11^{1/8} x 11^{3/4}"
(30.5 x 28.2 x 29.9cm)

17.5lbs (8kg)



1000 IWSUB UTOPIA

Closed-back in-wall subwoofer (see p.25)



100 IWSUB8

Passive subwoofer (see p.41)

CI EXPERT

OFFICIAL PARTNER

So you can optimise the full potential of our 1000 Series, our dedicated retailer network is on hand to listen to your requirements. These specialist teams are trained in Focal products and can assist you with any questions you may have. Our installers also have priority access to The Cinema Designer global software to accurately design your installation and offer a bespoke service.



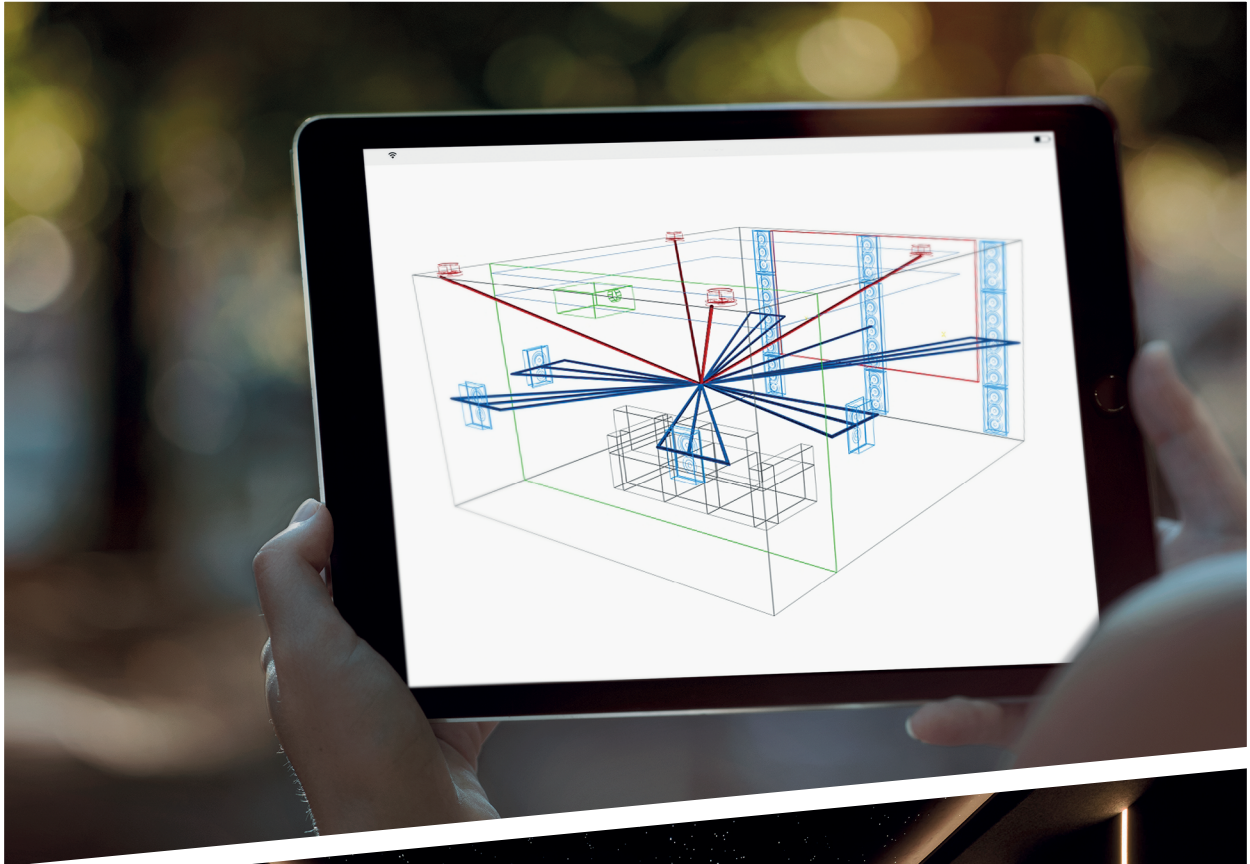
Contact our CI Expert reseller network
to help you create your Home Cinema:

www.focal.com/ci-expert



Your bespoke Home Cinema

The Focal Integration products are available on The Cinema Designer global database. This interactive cloud software pulls together the entire design process of an outstanding Home Cinema system. Based on the size of your room, it specifies the exact placement of the loudspeakers, screen, seats and projector. It details requirements in terms of amplification and much more.



SIGNATURE SOUND

In its constant quest for the purest, most immersive and transparent sound, Focal infuses its energy and imagination into the design of loudspeakers to meet every listening and installation need. Traditional floor-standing models or models integrated into walls and ceilings: all speakers benefit from Focal know-how and the same exclusive technologies. They offer a high-fidelity sound harmonious between the ranges and, more broadly, the unique Focal sound signature that will magnify the singularity of every living space.



ON WALL
300



300-SERIES



DÔME
FLAX



ARIA EVO X



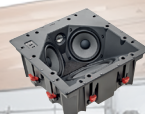
KANTA



SIB EVO

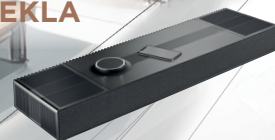


100 SERIES



THEVA

MU-SO
HEKLA



CONNECTED INDOOR SOLUTIONS

01. MU-SO HEKLA 77

02. MU-SO 83



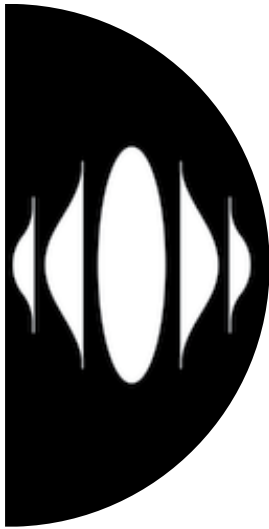
01.

MU-SO HEKLA

**More than an audio system,
a full sensory experience**

Dive into your movies, music, and video games with Mu-so Hekla. This all-in-one immersive system, compatible with all your audiovisual content, combines Dolby Atmos® technology, high performance, and ease of use. The sound spatialization is spectacular, powered by 15 high-precision speakers and a total amplification of 660 watts. Thanks to room-adaptive tuning and customizable audio modes, the immersive experience is fully tailored to you.

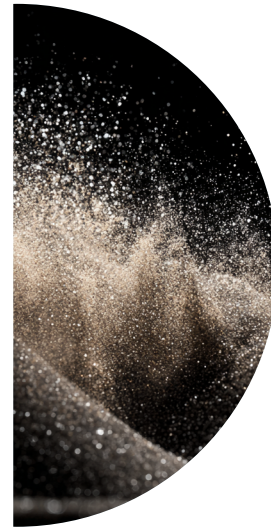




Dolby Atmos®
technology



660 W amplification
15 speakers



Exclusive
SPHERE module



Easy control via
the Focal & Naim app



Customizable
audio modes



Patented ADAPT
technology





MU-SO HEKLA

Type	All-in-one Immersive system	
Speaker Drivers	Front: 3 x Woofers (6"x3") 2 x Midranges (2.75") 2 x Tweeters (1")	Side: 4 x Full range (1.5"x 2.75") Top: 4 x Full range (1.5"x 2.75")
Bandwidth (+/-3dB)	30Hz - 20kHz	
Analogue outputs	1 x RCA pair for subwoofer connection	
Digital inputs	1 x Optical TOSLINK (up to 24bits/96kHz) 1 x HDMI eARC, CEC 1 x RJ45 Ethernet	
Wireless streaming technologies	Google Cast, AirPlay, Bluetooth®, UPnP™, Spotify® via Spotify Connect, TIDAL® via TIDAL Connect, Qobuz® via Qobuz Connect, QQ Music® via QPlay (China only)	
Audio format	WAV, FLAC and AIFF, ALAC, MP3, AAC, OGG, OPUS, DSD64 and DSD128, Bluetooth® 5.1 - SBC, AAC	
Multichannel Audio Format	Dolby Digital AC3, Dolby Digital AC4, Dolby Digital Plus (EAC3), Dolby Digital TrueHD, Dolby MAT (HDMI only), FLAC multicanal (streamer only), WAV multicanal (streamer only), Apple APAC (streamer only)	
Multiroom Connectivity	Sync up to 32 Focal & Naim streaming devices and control them from the Focal & Naim App	
Finishes	Brushed anodised and sandblasted aluminium	
Dimensions (HxWxD)	4.65x39.37x11.61" (11.8x100x29.5cm)	
Weight	15.5 kg	



02.

MU-SO

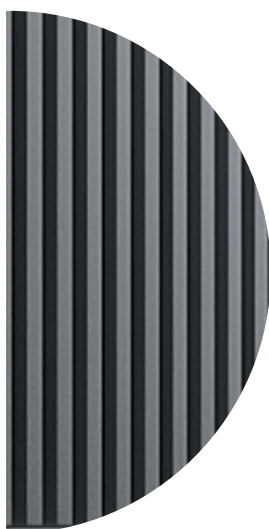
Remastered excellence

Mu-so 2nd Generation from Naim Audio is a wireless all-in-one system that deliver high-resolution listening experiences, whether you want to enjoy your digital musical collection, Internet radio or streaming platforms. You will also benefit from multi-room installation options, multiple features and, of course, musical power delivered by their Focal-optimised speaker drivers.





Multiroom application



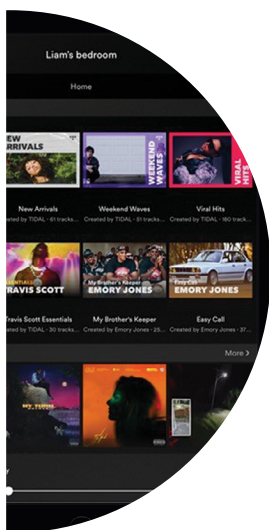
Aluminium heatsink



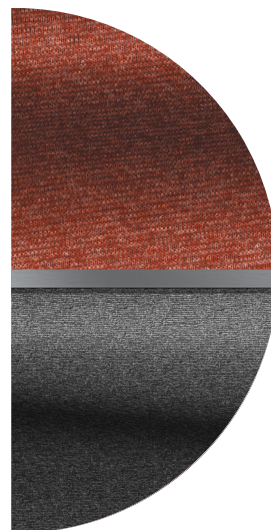
Interactive control crown



Brushed Aluminium finish



Integrated streaming services



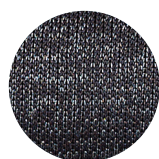
Black or coloured grille



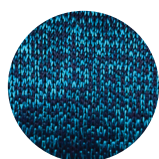


MU-SO 2ND GENERATION

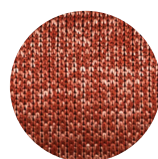
Type	3-way bass-reflex stereo connected speaker	
Audio Inputs	HDMI	ARC and CEC
	Streaming	AirPlay 2, Chromecast Built-in, UPnP™, Spotify® Connect, TIDAL, Roon Ready, Bluetooth®, Internet Radio, Qobuz
	Analogue	3.5mm Jack
	USB	USB 2 (Type A connector)
	Digital optical toslink	S/PDIF up to 24bit/96kHz
Finishes	Burnished and anodised aluminium casework, CNC milled, bead blasted and anodised aluminium heatsinks, dual-tone grey and black fabric grille	
Power	Amplifier Output 450W - (6 x 75W)	
Dimensions (HxWxD)	4¾ x 24¾ x 10⅜" (12.2 x 62.8 x 26.4cm)	
Weight	24.7lbs (11.2kg)	



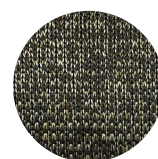
Black



Peacock



Terracotta



Olive

MU-SO GRILLE

Compatible with
the standard edition

OUTDOOR SOLUTIONS

01. LITTORA 1000 91

02. LITTORA 200 97

03. 100 SERIES 103



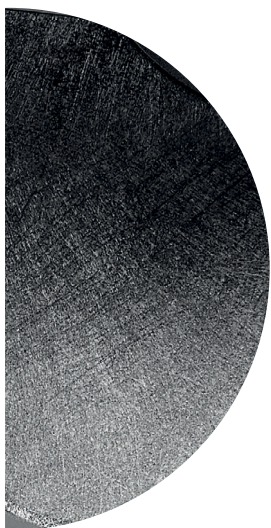
01.

LITTORA 1000

The sound of French Riviera

Experience sensational music-inspired emotion on dry land and at sea: that's the promise made by the Littora 1000 products. Discreetly fitted in the walls and ceilings of yachts and premises located in coastal environments, and spaces such as spas and steam rooms, these products are inspired by the Utopia line of in-wall / in-ceiling products to offer the best outdoor and indoor sound. Equipped with a brand new Fiber IP cone, they benefit from the international IP65 certification, guaranteeing their perfect waterproofing in marine and other wet environments.





IP Fiber
cone



Beryllium
tweeter



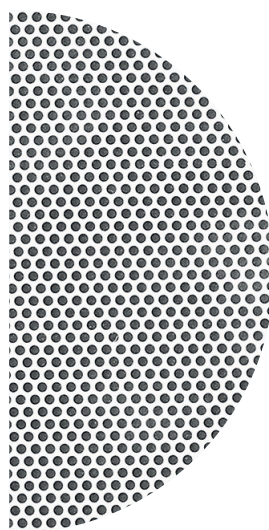
Certified (IP65)
waterproofing



Indoor/Outdoor
mode



Adjustable
treble level



Ready-to-paint
grille





1000 ICW8

1000 ICW10

1000 ICW SUB10

Type	2-way coaxial in-wall/in-ceiling	2-way coaxial in-wall/in-ceiling	Subwoofer in-wall/in-ceiling
Speaker drivers	<ul style="list-style-type: none"> 8" (20cm) Fiber IP Mid-Bass 1" (25mm) pure Beryllium 'M'-shaped inverted dome tweeter 	<ul style="list-style-type: none"> 10" (25cm) Fiber IP Mid-Bass 1" (25mm) pure Beryllium 'M'-shaped inverted dome tweeter 	10" (25cm) Fiber IP Woofer
Frequency response	45Hz - 40kHz	38Hz - 40kHz	25Hz - 500Hz
Sensitivity (2.83V/1m)	91dB	92dB	90dB
Nominal impedance	8Ω	8Ω	8Ω
Recommended amp power	50 - 180W	50 - 200W	100 - 300W
Settings	Tweeter (-3dB, 0dB, +3dB) Crossover: Indoor/Outdoor switch	Tweeter (-3dB, 0dB, +3dB) Crossover: Indoor/Outdoor switch	-
Operating temperatures	-25°C to 90°C	-25°C to 90°C	-25°C to 90°C
UV resistance	Yes	Yes	Yes
Dimensions (ØxD)	10⅞ x 4⅞" (25.6 x 12.3cm)	10⅞ x 5¼" (27.8 x 13.3cm)	11½ x 5⅜" (29.3 x 13.6cm)
Mounting dimension (Ø)	9⅞" (23.1cm)	12" (30.5cm)	12¾" (32.2cm)
Mounting depth	4½" (11.3cm)	4¾" (12.2cm)	4⅞" (12.3cm)
Weight	4.1lbs (2.2kg)	5.8lbs (2.5kg)	10.2lbs (4.6kg)
Accessory (optional)	8" tilted stand	10" tilted stand	10" tilted stand



02.

LITTORA 200

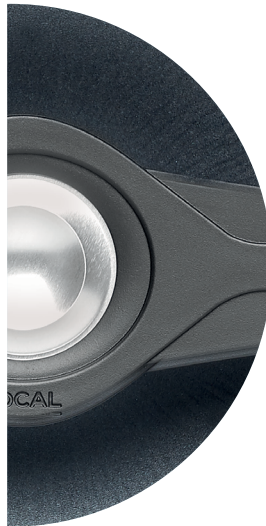
The Sound of French Riviera

Whether you're on the deck of a yacht, in a spa, a garden, on a terrace, or by the pool – bring Focal sound quality to your outdoor space with speaker drivers and loudspeakers as high performing as they are discreet, and as hard-wearing as they are elegant. Versatility and ease of integration characterise the Littora 200 products, which can be installed anywhere and for an impressive period of time, thanks to their certified watertight Iris IP cone. While the in-wall and in-ceiling speaker drivers blend in seamlessly, the outdoor loudspeakers present unique design and finishes, like OD Stone 8.





Iris IP
cone



Aluminium
tweeter



Certified (IP65/IP55)
waterproofing



Sonic coherence,
allround system






Sleek
design



Hard-wearing
finishes





	OD SAT 5	OD SUB 12	OD STONE 8
Type	2-way outdoor speaker	Buried outdoor subwoofer	2-way outdoor speaker
Speaker drivers	<ul style="list-style-type: none"> • 5" (13cm) Iris IP Mid-Bass • 1" (25mm) Aluminium 'M'-shaped inverted dome tweeter 	12" (30 cm) Iris IP Woofer	<ul style="list-style-type: none"> • 8" (20cm) Iris IP Mid-Bass • 1" (25mm) Aluminium 'M'-shaped inverted dome tweeter
Frequency response	90Hz - 28kHz	40Hz - 120Hz	45Hz - 28kHz
Sensitivity (2.83V/1m)	88dB	90dB	89dB
Nominal impedance	8Ω	6Ω	8Ω
Recommended amp power 8Ω	20W - 100W	50W - 300W	20W - 150W
Recommended amp power	50W RMS - 100W Peak	100W RMS - 400W Peak	75W RMS - 150W Peak
Power 70/100V	5W, 10W, 20W, 40W	300W (150W RMS)	50W
Crossover settings	-	-	-
Operating temperatures	-20°C to 65°C	-20°C to 65°C	-20°C to 65°C
Dimensions (HXWxD ou ØxD)	12¾ x 12¾ x 8¾" (32 x 32 x 21cm)	14 ¹⁵ / ₁₆ x 36¼ x 22 ³ / ₁₆ " (38 x 92 x 56cm)	11 ⁷ / ₁₆ x 17 ⁷ / ₁₆ x 17 ⁷ / ₁₆ " (29 x 44 x 44cm)
Mounting dimensions (Ø)	-	-	-
Mounting depth	-	-	-
Finishes			
Weight	5.8lbs (2.5kg)	41lbs (19kg)	14.5lbs (6.5 kg)
Accessory (optional)	-	-	-



200 ICW6

2-way coaxial
in-wall/in-ceiling

- 6½" (16.5cm) Iris IP Mid-Bass
- 1" (25mm) Aluminium 'M'-shaped inverted dome tweeter

65Hz - 28kHz

89dB

8Ω

-

25 - 130W

-

Indoor/Outdoor switch

-25°C to 90°C

8¼ x 3¾"
(21 x 9.5cm)

8¼" (21cm)

3¾" (9.5cm)

-

3.1lbs (1.8kg)

6" tilted stand

200 ICW8

2-way coaxial
in-wall/in-ceiling

- 8" (20cm) Iris IP Mid-Bass
- 1" (25mm) Aluminium 'M'-shaped inverted dome tweeter

48Hz - 28kHz

90dB

8Ω

-

25 - 150W

-

Indoor/Outdoor switch

-25°C to 90°C

10⅞ x 4⅞"
(25.5 x 11.3cm)

10⅞" (25.5cm)

4⅞" (11.3cm)

-

5.8lbs (2.5kg)

8" tilted stand

PACK LITTORA OD 4.1

4 x 200 OD SAT 5
1 x 200 OD SUB 12



03.

100 SERIES

Discreet musicality

The 100 OD6 and 100 OD8 loudspeakers offer Focal quality sound reproduction outdoors. Just like the other models in the 100 Series range, they contain an aluminium inverted dome tweeter and a Polyglass treated bass/midrange speaker driver at the source of their excellent performance. IP66-certified and benefiting from anti-UV treatment, they are resistant to all weathers and are easily mounted either vertically or horizontally.





Polyglass
cone



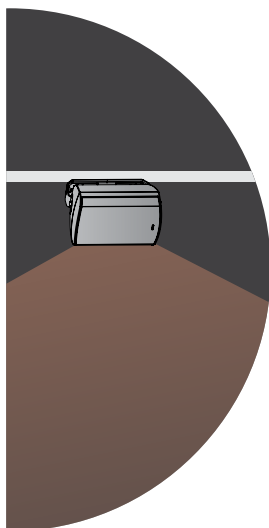
Horizontal or
vertical position



Certified
waterproofing (IP66)



Closed-back
construction



Wide sound
dispersion



White / Black
finish





	100 OD8	100 OD6
Type	Outdoor loudspeaker	Outdoor loudspeaker
Speaker drivers	<ul style="list-style-type: none">• 8" (21cm) Polyglass Mid-Bass• 1" (25mm) Aluminium inverted dome tweeter	<ul style="list-style-type: none">• 6^{1/2}" (16.5cm) Polyglass Mid-Bass• 1" (25mm) Aluminium inverted dome tweeter
Frequency response	60Hz - 23kHz	65Hz - 23kHz
Sensitivity (2.83V/1m)	88dB	87dB
Nominal impedance	8Ω	8Ω
IP certification	IP66	IP66
Recommended amp power	20 - 150W	20 - 120W
Dimensions with brackets (HxWxD)	15 ^{6/16} x 10 ^{3/16} x 11" (39 x 25.8 x 28cm)	12 ^{9/16} x 8 ^{13/16} x 10 ^{1/16} (31.9 x 22.4 x 25.6cm)
Finishes	 	 
Weight	12.6lbs (5.8kg)	9lbs (4.1kg)



ELECTRONICS

01. ASTRAL 16 111

02. CI SERIES 117

03. UNITI 123



01.

ASTRAL 16

Sound immersion

Astral 16 is a 16-channel audio-video processor and amplifier that allows you to enjoy your private cinema screenings at their best. Compatible with Control4, Crestron, Savant and RTI, this cutting-edge electronic device incorporates 12 class-D amplified channels and handles all audio formats (Dolby Atmos®, DTS:X™ etc.). You can control whichever system you want by room via an app, enjoy access to technical support at any time and customise your system as desired.

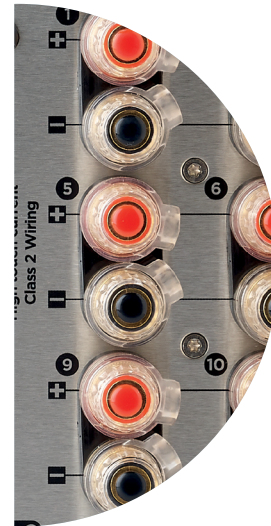




Audio-video
processor



Upgradable
product



12 x
250W RMS



Home Theater
& Multiroom



Dolby Atmos®
DTS:X™, Auro-3D®



Dirac Live® acoustics
correction





ASTRAL 16

Type	16 channel audio-video processor and amplifier	
Main features	• Compatible formats	Dolby Atmos [®] / DTS:X [™] / Auro-3D [®]
	• Calibration	Powered by Dirac Live [®] : target curve editable from 20Hz to 20kHz for all channels (including subwoofers), phase correction full bandwidth 20Hz - 20kHz on all channels (including subwoofers)
	• 'Remote Monitoring' function	
Multichannel / Surround Processing	• Output channels	16
	• Decoding / upmixing channels	Up to 16 channels
HDMI	• Input sampling rate supported	Up to 192kHz
	• Stereo downmix	
	• Bass management	Fully flexible
	• Multi-subwoofer channels	Unlimited
	• Multi-way crossover	(6-12-18-24-36-48dB/oct)
	• 20 Parametric EQ per channel	
	• HDMI inputs	7 : HDMI 2.0 / HDCP 2.2
Audio Inputs	• HDMI outputs (mirror)	1 : HDMI 2.0 / HDCP 2.2 (with eARC)
	• Supported video format	2 : HDMI 2.0 / HDCP 2.2
	• High Dynamic Range	up to 4K UHD
	• Color Space and Subsampling	HDR10 / HLG
	• Deep Color	4:4:4, 4:2:2, 4:2:0
	• Max resolution supported	12 bpc
		4K 60fps 4:4:4 8bpc
Amplified Audio Outputs		3D / 4K / eARC
	• Digital input	3 x coaxial, 3 x optical
	• Analog stereo inputs	4 x RCA inputs
	• Amplified main outputs	12
	• Analog main outputs, balanced	4 x XLR
	• Stereo downmix outputs, balanced	2 x XLR
	• Technology	Class D
Amplified Audio Outputs	• Amplified channels	12
	• Continuous power output, per channel, to 0.1%THD	8Ω / 4Ω / 2.7Ω
	• 3 channels driven simultaneous	200W / 400W / 650W
	• 6 channels driven simultaneous	200W / 350W / 350W
	• 12 channels driven simultaneous	200W / 300W

Set-Up Management	<ul style="list-style-type: none"> • Configurable multi-theater management • Configurable audio zones management • Unlimited Theater and audio zones listening presets • Backup and restore of set-up • Firmware update via USB/network 	
Control Inputs and Outputs	<ul style="list-style-type: none"> • USB type A • Ethernet • Trigger • IR remote ports, in/out 	2 4 (out) 1 / 1
Control and custom Installation	<ul style="list-style-type: none"> • Web-based product configurator • TCP/IP API based control • Focal Remote iPad® control application • Home automation • Front panel display 	Control4, Crestron, RTI and Savant TFT 4.3"
Power Supply	<ul style="list-style-type: none"> • Voltage range • Type • Range selection 	100V to 240V SMPS Universal
Supplied with	<ul style="list-style-type: none"> • Calibrated measurement microphone and tripod • Dirac Live® license • 32.9ft (10m) cable with infra-red detector • Mounting kit 	
Dimensions avec stands (HxWxD)	7½ x 18⅞ x 19⅝" (19.1 x 47.9 x 49cm)	
Weight	Weight net with stands Weight net with accessories for rack	44.1lbs (20kg) 50.7lbs (23kg)

02.

CI SERIES

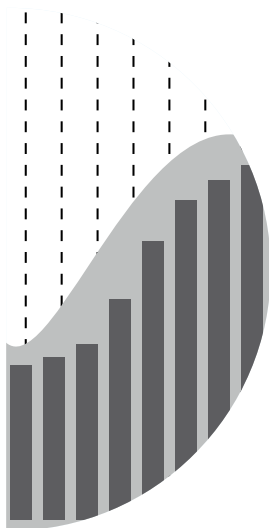
The best in integrated audio

The Naim CI Series range of electronics has been designed to be the perfect complement to Focal integrated loudspeakers, as well as hi-fi speakers such as Theva and Aria Evo X. Combining versatility, compactness, upgradability and sound quality, these streaming and amplification solutions cater to all installation preferences with both power and discretion.





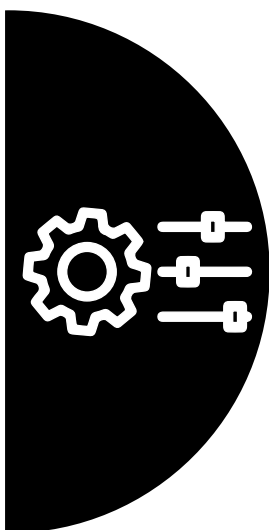
Compact
and powerful



High-resolution
streaming



Focal & Naim
Manager software



Integrated DSP &
Focal Speaker Profiles



Rackable
products



Multiroom
app





CI-NAP 101			CI-NAP 108		
Type		Amplifier		Amplifier	
Number of channels		1		8	
Power low impedance	8Ω	500W		150W	
	4Ω	800W		260W	
Power high impedance	100V	240W		-	
	70V	150W		-	
Audio Inputs		Analogue - RCA stereo Combined to mono (47kΩ)		Analogue - RCA (47kΩ)	
Audio Outputs		Line	Stereo RCA	Line	RCA
		Low Impedance	Euroblock		
		70V	Euroblock	Speakers	Euroblock
		100V	Euroblock		
Total Harmonic Distortion		<0.008%		<0.006%	
Gain		29dB		29dB	
Signal-to-noise ratio		110dB (A-weighted)		105dB (A-weighted)	
Frequency response (-3dB)		Low impedance	3Hz - 70kHz	3Hz - 70kHz	
		High impedance	50Hz/120Hz - 25kHz		
Operating power supply		100V to 240V +/-10%, 50/60Hz		100V to 240V +/-10%, 50/60Hz	
Wired automation		12V in/out		12V in/out	
Rack height		1U		1.5U	
Dimensions (HxLxD)		1¾ x 17⅞ x 11¾" (4.45 x 44 x 30cm)		2⅝ x 17⅞ x 11¾" (6.66 x 44 x 30cm)	
Weight		19.6lbs (8.9kg)		15.4lbs (7.7kg)	



CI-UNITI 102		
Type	Streamer amplifier	
Number of channels	Line	4
	Amp	2
Power (Low Impedance)	8Ω	150W
	4Ω	260W
Audio Inputs	<ul style="list-style-type: none"> Analogue – Stereo RCA - (47kΩ / 2.5V RMS) S/PDIF – up to 24bit/96kHz HDMI eARC – LPCM up to 24bit/192kHz Stereo 	
Audio Outputs	<ul style="list-style-type: none"> Main: 1 Stereo RCA Amplified: Terminal block / Euroblock / Banana connector - 4mm Sub/Aux : 1 Stereo RCA 	
Compatible streaming services	TIDAL • TIDAL Connect • Spotify Connect – Free + Premium support • Qobuz UPnP™ with PlayQueue • Internet Radio + Podcasts • AirPlay 2 • ChromeCast v2 Dante Receiver – 48kHz supported • Bluetooth® Classic Audio Receiver • SBC + AAC supported	
User interface	Focal & Naim App: Basic use • Focal & Naim Manager: Configuration	
Compatible operating systems	Focal & Naim: iOS et Android • Focal & Naim Manager: Windows, MacOS	
Multiroom	Naim Multiroom – Up to 32 devices on a single session Compatible with all generations of Naim streamers	
Integration partners	Control4, Crestron, EIAN, Savant	
Wired automation	2 x 1/8" (3.5mm) mono jack connectors - 12V trigger outputs	
Network	<ul style="list-style-type: none"> RJ45 Gigabit Ethernet – compatible with IPv4 and IPv6 802.11ax (Wi-Fi 6) - 2x2 MIMO – External antenna Bluetooth LE v5.1 – External antenna shared with Wi-Fi 1 	
Total Harmonic Distortion	<0.006%	
Gain	29dB	
Signal-to-noise ratio	110dB (A-weighted)	
Frequency response (-3dB)	5Hz - 70kHz	
Max sampling rate	32 bit / 384 kHz	
Operating power supply	100V to 240V +/-10%, 50/60Hz	
Rack height	1U	
Dimensions (HxLxD)	1¾ x 11¾ x 11¾" (4.45 x 30 x 30cm)	
Weight	9.9lbs (4.5kg)	

03.

UNITI

Amplify your emotions

The Uniti range from Naim Audio comprises all-in-one players that work individually or in combination with other devices. Simply add loudspeakers to allow your music to express itself fully in any room in your home. Assembled by hand by the Naim experts in their Salisbury workshops in England, these sleek and compact players offer a deep immersive sound.





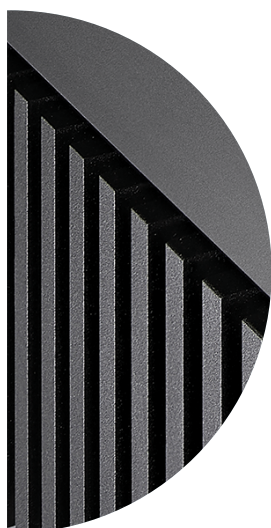
Multiroom
Naim app



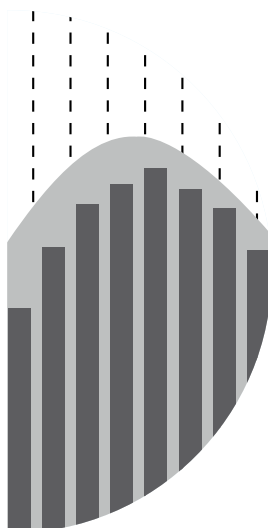
Glass LCD
colour screen



Volume
wheel



Brushed
Aluminium



High-resolution
streaming



Multiple
sources





UNITI NOVA PE

Type	All-in-one music streaming player
Streaming	Qobuz, TIDAL, TIDAL Connect, Spotify™ Connect, Internet Radio, AirPlay 2, Chromecast Built-in, Bluetooth® (AptX™ HD), UPnP™ (High-Res streaming), Roon Ready
Audio inputs	<ul style="list-style-type: none">• 2 x Optical Toslink (up to 24bits/96kHz)• 2 x Coaxial RCA (up to 24bits/192kHz, DoP 64Fs)• 1 x BNC (up to 192kHz, DoP 64Fs)• 1 x HDMI ARC• 2 x RCA pairs• 2 x 5-pin DIN• 2 x USB Type A socket (front and rear)
Audio outputs	<ul style="list-style-type: none">• 1 x Stereo power amplifier• 1 x 4-pin DIN• 1 x RCA sub/pre pair• 1 x 3.5mm headphone jack
USB	2 x USB Type A Socket (front and rear)
Multiroom	Sync up to five Naim Streaming products and control via the Focal & Naim App
Amplifier output	150W 8Ω @ 0,1 % THD+N
Dimensions (HxWxD)	4½ x 17 x 10⅝" (11.6 x 43.2 x 26.5cm)
Weight	33.3lbs (15.1kg)



UNITI NOVA

All-in-one music streaming player

Qobuz, TIDAL, TIDAL Connect, Spotify™ Connect, Internet Radio, AirPlay 2, Chromecast Built-in, Bluetooth® (AptX™ HD), UPnP™ (High-Res streaming), Roon Ready

- 2 x Optical Toslink (up to 24bits/96kHz)
 - 2 x Coaxial RCA (up to 24bits/192kHz, DoP 64Fs)
 - 1 x BNC (up to 192kHz, DoP 64Fs)
 - 1 x HDMI ARC
 - 2 x RCA pairs
 - 2 x 5-pin DIN
 - 2 x USB Type A socket (front and rear)
 - 1 x SD card
-

- 1 x Stereo power amplifier
 - 1 x RCA sub/pre pair
 - 1 x 3.5mm headphone jack
-

2 x USB Type A Socket (front and rear)

Sync up to five Naim Streaming products
and control via the Focal & Naim App

80W per channel into 8Ω

3¾ x 17 x 10½" (9.5 x 43.2 x 26.5cm)

28.7lbs (13kg)



UNITI STAR

Type	All-in-one music streaming player
Streaming	Qobuz, TIDAL, TIDAL Connect, Spotify™ Connect, Internet Radio, AirPlay 2, Chromecast Built-in, Bluetooth® (AptX™ HD), UPnP™ (High-Res streaming), Roon Ready
Audio inputs	<ul style="list-style-type: none">• 2 x Optical Toslink (up to 24bit/96kHz)• 2 x Coaxial RCA (up to 24bit/192kHz, DoP 64Fs)• 1 x BNC (up to 192kHz, DoP 64Fs)• 1 x HDMI ARC• 1 x RCA pair• 1 x 5-pin DIN• 2 x USB Type A socket (front and rear)• 1 x SD card
Audio outputs	<ul style="list-style-type: none">• 1 x Stereo power amplifier• 1 x RCA sub/pre pair• 1 x 3.5mm headphone jack
USB	2 x USB Type A Socket (front and rear)
Multiroom	Sync up to five Naim Streaming products and control via the Focal & Naim App
Amplifier output	70W per channel into 8Ω
Dimensions (HxWxD)	3¾ x 17 x 10½" (9.5 x 43.2 x 26.5cm)
Weight	26.5lbs (12kg)



UNITI ATOM

All-in-one music streaming player

Qobuz, TIDAL, TIDAL Connect, Spotify™ Connect, Internet Radio, AirPlay 2, Chromecast Built-in, Bluetooth® (AptX™ HD), UPnP™ (High-Res streaming), Roon Ready

- 2 x Optical Toslink (up to 24bit/96kHz)
 - 1 x Coaxial RCA (up to 24bit/192kHz, DoP 64Fs)
 - 1 x HDMI ARC
 - 1 x RCA pair
 - 2 x USB Type A socket (front and rear)
-

- 1 x Stereo power amplifier
 - 1 x RCA sub/pre pair
 - 1 x 3.5mm headphone jack
-

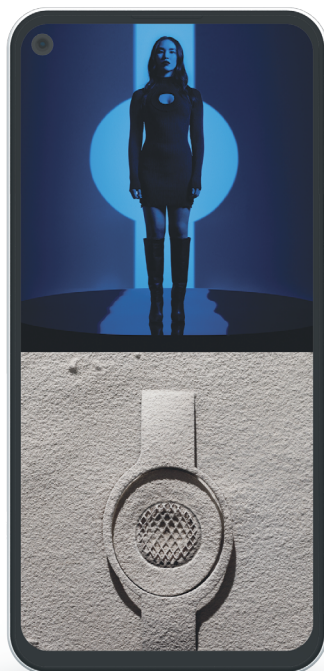
2 x USB Type A Socket (front and rear)

Sync up to five Naim Streaming products and control via the Focal & Naim App

40W per channel into 8Ω

3¾ x 9⅝ x 10½" (9.5 x 24.5 x 26.5cm)

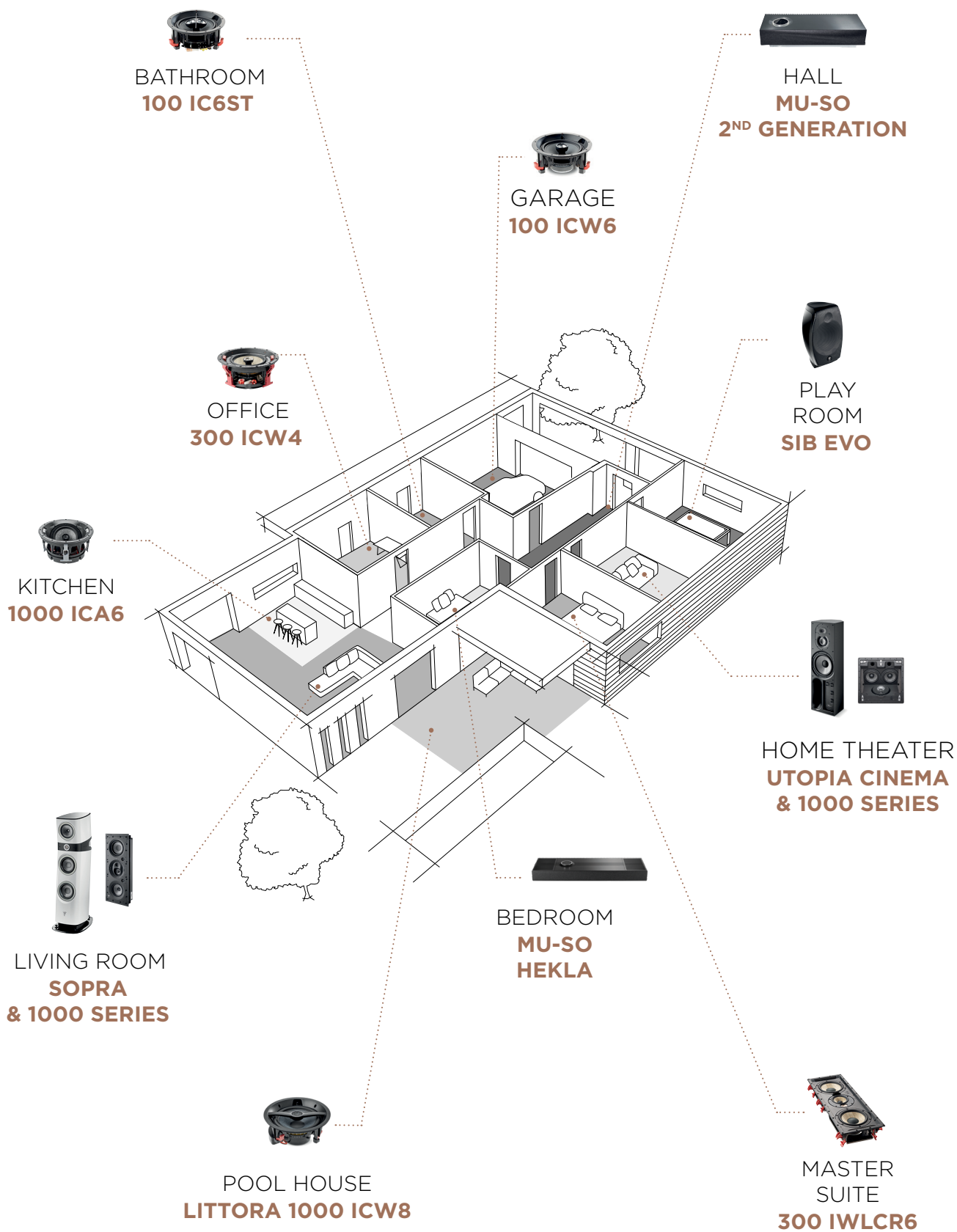
15.45lbs (7kg)



APPLICATION FOCAL & NAIM

Available on iOS and Android, the simple yet sophisticated Focal x Naim App lets you easily control and organise your audio experience across all connected Naim products. Play music in every room, adjust the volume, choose your tracks, browse album covers, create playlists, save your favourite radio stations, and much more.





COMMERCIAL SOLUTIONS

100-T SERIES 135



100-T SERIES

Focal sound for large spaces

The 100-T Series is a direct descendant of the 100 Series, but with the addition of a transformer that adjusts the power of the loudspeakers for 70V/100V systems. This makes it possible to cover a very large listening area and minimise amplifier channels. The compact design and low directivity of the speaker drivers make them incredibly discreet and musically uniform, whilst Focal's expertise guarantees your large spaces will have that incredible sound signature.

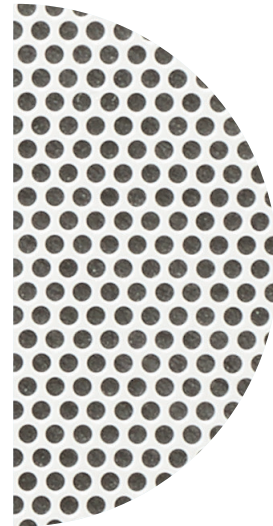




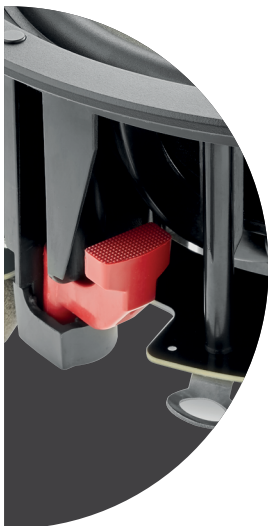
Polyglass
cone



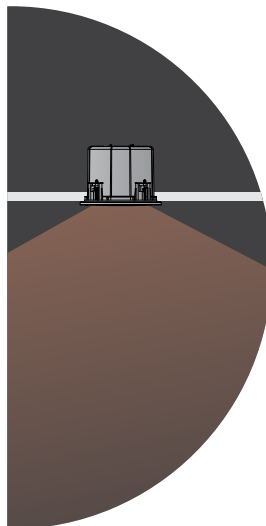
Positionable
tweeter



Ready-to-paint
grille



Unibody
chassis



Wide
dispersion



High impedance
70V/100V





100 ICW8-T

100 ICW6-T





100 ICW5-T

Type	2-way coaxial in-wall/in-ceiling 70V/100V line installation	2-way coaxial in-wall/in-ceiling 70V/100V line installation	2-way coaxial in-wall/in-ceiling 70V/100V line installation
Speaker drivers	<ul style="list-style-type: none"> • 8" (21cm) Polyglass Mid-Bass • 1" (25mm) Aluminium inverted dome tweeter 	<ul style="list-style-type: none"> • 6" (16.5cm) Polyglass Mid-Bass • 1" (25mm) Aluminium inverted dome tweeter 	<ul style="list-style-type: none"> • 5" (13cm) Polyglass Mid-Bass • 1" (25mm) Aluminium inverted dome tweeter
Frequency response	53Hz - 23kHz	62Hz - 23kHz	65Hz - 23kHz
Power in 70V	7.5/15/30W	4/7.5/15W	2/4/7.5W
Power in 100V	15/30/60W	7.5/15/30W	4/8/15W
Sensitivity (2.83V/1m)	90dB	89dB	88dB
Nominal impedance	8Ω	8Ω	8Ω
Recommended amp power	25 - 100W	25 - 100W	15 - 100W
Dimensions (ØxP)	9¾ x 4⅝" (24.8 x 11.1cm)	8⅜ x 3¾" (20.8 x 9.5cm)	7¼ x 4" (18.4 x 10cm)
Mounting dimensions	8⅜" (22.4cm)	7¼" (18.4cm)	6⅜" (15.7cm)
Mounting depth	4¼" (10.7cm)	3⅝" (9.1cm)	3¾" (9.6cm)
Weight (with grille)	5lbs (2.3kg)	3.75lbs (1.7kg)	3.5 lbs (1.6kg)



100 OD8-T

100 OD6-T

Type	Outdoor loudspeaker (IP66 certified)	Outdoor loudspeaker (IP66 certified)
Speaker drivers	<ul style="list-style-type: none"> • 8" (21cm) Polyglass Mid-Bass • 1" (25mm) Aluminium inverted dome tweeter 	<ul style="list-style-type: none"> • 6½" (16.5cm) Polyglass Mid-Bass • 1" (25mm) Aluminium inverted dome tweeter
Frequency response	60Hz - 23kHz	65Hz - 23kHz
Power in 70V	15/30/60W	7,5/15/30W
Power in 100V	30/60/120W	15/30/60W
Sensitivity (2.83V/1m)	88dB	87dB
Nominal impedance	8Ω	8Ω
Recommended amp power	20 - 150W	20 - 120W
Dimensions with brackets (HxWxD)	15 ^{6/16} x 10 ^{3/16} x 11" (39 x 25.8 x 28cm)	12 ^{9/16} x 8 ^{13/16} x 10 ^{1/16} (31.9 x 22.4 x 25.6cm)
Finishes	 	 
Weight	12.6lbs (5.8kg)	9lbs (4.1kg)



Safety certification

The 100-T Series in-ceiling coaxial loudspeakers are UL-certified (UL 1480 and UL 2043). Those are recognised american standards for fire and electric shock risks, meaning they are fully compliant with current regulations on fire and electric shock risks.



100 IC8-T UL

100 ICS6-T UL

Type	2-way coaxial bass-reflex in-ceiling 100V/70V or 8Ω installations Steel back can	2-way coaxial bass-reflex in-ceiling 100V/70V or 8Ω installations Steel back can
Speaker drivers	<ul style="list-style-type: none"> • 8" (21cm) Polyglass Mid-Bass • 1" (25mm) Aluminium inverted dome tweeter 	<ul style="list-style-type: none"> • 6½" (16cm) Polyglass Mid-Bass • 1" (25mm) Aluminium inverted dome tweeter
Frequency response	53Hz - 23kHz	70Hz - 23kHz
Power in 70V	8/15/30W	4/8/15W
Power in 100V	15/30/60W	8/15/30W
Sensitivity (2.83V/1m)	91dB	89dB
Nominal impedance	8Ω	8Ω
Recommended amp power	15 - 150W	15 - 100W
Certifications	UL 1480 / UL 2043	UL 1480 / UL 2043
Dimensions (ØxP)	11¾ x 8⅞" (29.7 x 22.5cm)	11¾ x 5⅞" (29.7 x 12.9cm)
Mounting dimensions	10⅜" (26.5cm)	10⅜" (26.5cm)
Mounting depth	8⅜" (21.2cm)	4" (10.3cm)
Weight (with grille)	9.37lbs (4.25 kg)	7.5lbs (3.4kg)

ACCESSORIES

Integrated loudspeakers

PRE-ASSEMBLY KITS

These kits allow you to precisely position in-wall and in-ceiling products in new builds. They comprise a mounting strip combined with a frame for the perfect placement of your loudspeakers.

Product compatibility

1000 IWLCR UTOPIA
2 X IWSUB UTOPIA
1000 IWSUB UTOPIA
1000 IWLCR UTOPIA & 1000 IWSUB UTOPIA
1000 IWLCR UTOPIA & 2 X 1000 IWSUB UTOPIA
1000 IWLCR6
1000 IW6
1000 ICW6
1000 ICA6
1000 ICLCR5
300 ICLCR5
300 IWLCR6
300 IW6
300 ICW8
300 ICW6
300 ICW4
100 IWLCR5
100 IW6
100 ICLCR5
100 ICW8 / 100 ICW8-T
100 ICW6 / 100 ICW6-T
100 IC6ST
100 ICW5 / 100 ICW5-T
100 IC8-T UL
100 ICS6-T UL

ON-WALL FRAMES

Mounted frames allow loudspeakers to be installed on walls. They are available in White High Gloss or raw, ready-to-paint finish. Slim, in-wall anti-vibration studs allow for easy installation.



Product compatibility

1000 IWLCR UTOPIA

1000 IWSUB UTOPIA

1000 IWLCR6

1000 IW6

TILTED STANDS

For a customized installation, an inclined bracket is available as an accessory with Littora products. By allowing the speaker to be angled at 30°, it ensures that the sound is directed fully towards the listening area.



Product compatibility

LITTORA 1000 ICW10

LITTORA 1000 ICW8

LITTORA 200 ICW8

LITTORA 200 ICW6

FIRE BACKCAN

Designed with materials specially adapted to high temperatures, this fire-proof built-in casing ensures your installation is safe, for perfect reliability. It also provides sound insulation.



Insulator	Product compatibility			Dimensions (HxWxD)
	1000 SERIES	300 SERIES	100 SERIES	
1 5/8" (40mm) ceramic fibre	1000 ICW6	300 ICW4 300 ICW6 300 IW6	100 ICW5 100 ICW6 100 ICW8 100 IC6ST 100 IW6	18 7/8" x 19" x 5 7/8" (47.8 x 48.2 x 14.9cm)





1000 SERIES



'The 1000 Series goes even further in terms of acoustic performance and integration possibilities'

RESIDENTIAL TECH



'Stunning new flagship CI speaker range combines class-leading performance, unique technologies and extreme flexibility, for the ultimate integration experience'

HOME THEATER HIFI



300 SERIES

'Among the easiest to fit in-ceiling loudspeakers on the market'

HOME CINEMA CHOICE



'Reference-grade sound from an in-wall speaker'

AUDIOHOLICS

'My day-to-day music listening and home theater system, without regret'

HOME THEATER



100 SERIES

'The sound is rich, the soundscape large and there is more than enough bass in them'

L&B TECH REVIEWS

'Focal's 100 ICLCR5 is a rare exception of an in-ceiling speaker that does a great job reproducing your home theater's front soundstage'

CRUTCHFIELD



ON WALL 300

'An acoustic wall art
for audiophiles keen on discretion'

ON MAG

'They will delight the passionate ones
who are looking for a high-end solution
dedicated to all uses'

COBRASON BLOG

'The next best thing
to in-wall speakers'

WHAT HIFI



ASTRAL 16



'An experience that was spine-tingling'

HOME CINEMA CHOICE

'This is high-end
hardware fit
for the finest of setups'

AVTECH MEDIA





DÔME FLAX

'Focal's Dôme Flax
sound great anywhere'

DIGITAL TRENDS

'A lovely soundstage,
fantastic neutrality,
and great detail'

RESIDENTIAL SYSTEMS

'High-quality, ultra-compact,
satellite style loudspeakers'

TRUSTED REVIEWS



SIB EVO

'An excellent immersive
audio experience'

AVFORUMS



'Good clarity
and excellent
surround integration'

CNET



'Great solution
for those looking
for effective
Dolby Atmos®'

TRUSTED REVIEWS



UNITI

'The looking is as impressive
as the sound'

WHAT HI-FI



'Among a constellation
of competitors, the Naim
Uniti Nova is a shining star'

ROBB REPORT



'Pretty perfect.
Cements Naim's reputation
as the Aston Martin
of the audio world'

FORBES



MU-SO

'The best wireless speakers
deliver top sound quality'

T3



'Comfortably
the best all-in one
we looked at this year'

AV FORUMS



'Put simply, it's difficult to go
back to any other wireless
speaker after trying the Qb'

THE INDEPENDANT

COLLECTIONS

Combining performance and design, Focal's collections are a revelation, awakening the emotions : at home with hi-fi, connected loudspeakers, Home Cinema systems and open-/closed-back headphones; on the go with incar kits; during travel with Bluetooth® Noise Cancelling Headphones; in the studio with monitors and professional headphones ; for outdoor spaces and at sea with yacht solutions.



Home Collection



Motorities Collection



Professional Collection

FOCAL *Powered by* **naim**

Enjoy an incredible sound experience

Find our products in 10,000 retail partner stores across the world, but also in our Focal Powered by Naim shops. These stores, dedicated to our brands, invite you to dive into our world, our savoir-faire and immerse yourself in the Focal & Naim sound.

www.focalpoweredbynaim.com



For more information, find us at:

www.focal.com



Focal JMLab®

BP 374 - 108, rue de l'Avenir - 42353 La Talaudière cedex - France - +33 (0) 477 435 700

Focal® is a registered trademark of Focal JMLab®, Naim® is a registered trademark of Naim Audio®.
Due to constant technological advances, Focal JMLab® and Naim Audio® reserve the right to modify prices and specifications without notice.
Non-binding pictures. Pictures : L'Atelier Sylvain Madelon / Envato Elements. SCLC/04/02/2026 - v6

